

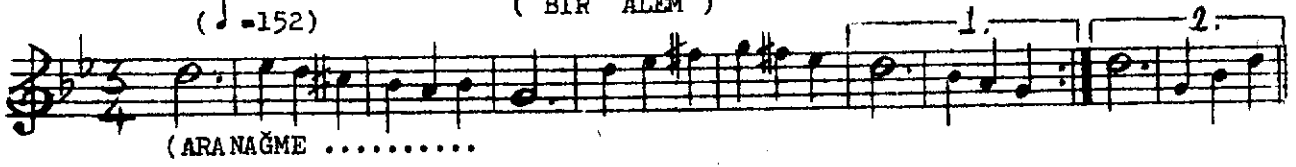
SEMAİ

NİHAVEND ŞARKI

Söz - Müzik
KÂZİM NARMANLI

(♩ = 152)

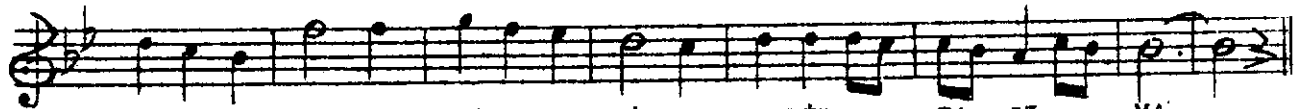
(BİR ÂLEM)



(ARA NAĞME



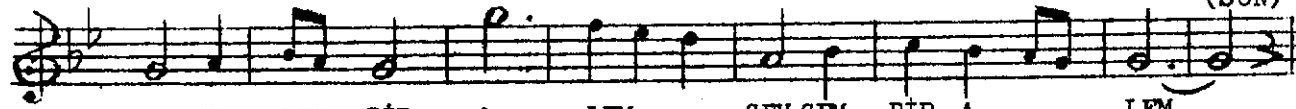
BİR SEV Gİ Lİ ÇIK TI BE NİM.. KAR.. ŞI MA



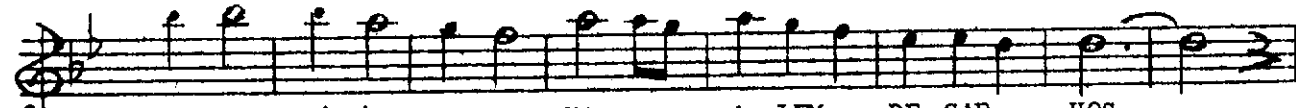
BİN.. BİR DERTGE TİR... Dİ .. GA RİP ... BA ŞI ... MA



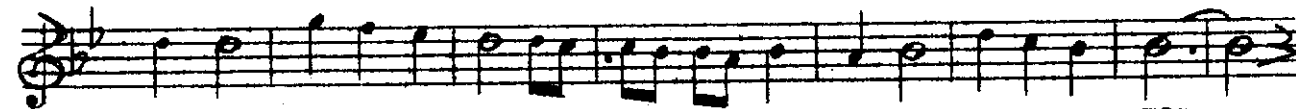
SO ĞUK.. SU LAR.. KAT TI PİŞ MİŞ A ŞI MA

SEV ME SEM BİR A LEM ... SEV SEM BİR A LEM
SAR MA SAM BİR A LEM ... SAR SAM BİR A LEMSEV ME SEM BİR A LEM ... SEV SEM BİR A LEM
SAR MA SAM BİR A LEM ... SAR SAM BİR A LEM

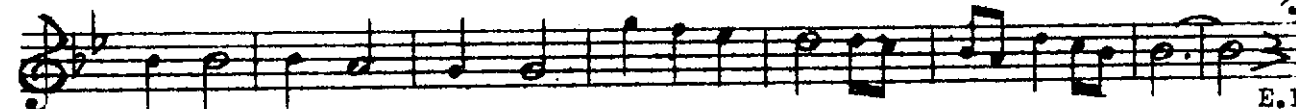
(SON)



HER HA Lİ BİR BAŞ .. KA A LEM.. DE SAR.. HOŞ



BA KAR GÜ ZEL .. GÖZ ... LER MAY HOŞ MU MAY.. HOŞ



AT TI KOL ... LA RI MA KEN Dİ Nİ BİR .. HOŞ

E.B.

BİR ÂLEM

BİR SEVGİLİ ÇIKTI BENİM KARŞIMA
BİNBİR DERT GETİRDİ GARİP BAŞIMA
SOĞUK SULAR KATTI PİŞMİŞ AŞIMA
SEVMESEM BİR ÂLEM SEVSEM BİR ÂLEM

HER HALİ BİR BAŞKA ÂLEMDE SARHOŞ
BAKAR GÜZEL GÖZLER MAYHOŞ MU MAYHOŞ
ATTI KOLLARIMA KENDİNİ BİR HOŞ
SARMA SAM BİR ÂLEM SARMAM BİR ÂLEM